

FUJIFILM

FUJI COMPUTED RADIOGRAPHY

NEW FCR Go

FCR Go gathers smiles everywhere – anytime, anyplace.



*Image
Intelligence*

FCR

A flexible and high-performance portable CR x-ray unit, all you need is the FCR Go.

The FCR Go offers you the capacity to make x-ray exposures and preview images quickly and accurately just about everywhere. Whether it's at the bedside, in the operating room, or within the intensive care unit, FCR Go lessens the inconveniences often experienced in making the rounds. This system truly enhances work efficiency by responding to the diverse hospital needs.



Highly Mobile

Mobility as you like it

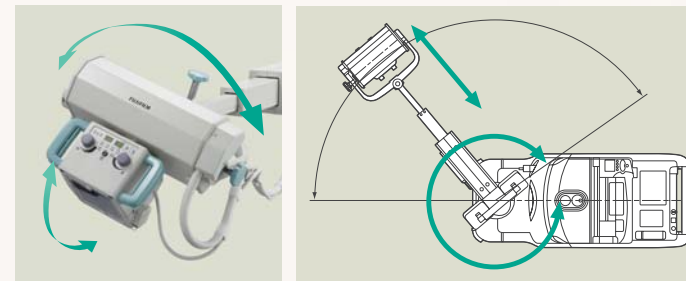
The dual motor drive allows free and smooth steering, with speed adjustment capability and gives superb mobility even in tight spaces. Designed to be silent, you can comfortably move the unit at night time. A touch sensor is situated on the front of the unit, stopping the machine automatically when an obstacle is touched.



Easy Positioning

Positioning as you need it

The telescopic arm adjusts easily to the precise, desired position. The arm also has extended horizontal and vertical travel letting you use longer exposure distances for high quality images. The x-ray tube also moves both horizontally and vertically, allowing desired positioning even when the arm is in a diagonal position. The rugged, lightweight IP cassettes, in a variety of sizes, add to the precise positioning you need to deliver high performance in areas with limited space such as at the bedside.



User Friendly

Smart and easy to use

Designed with the person using the system in mind, a remote panel has been attached to the tube head. With this panel, operating the unit is simple, from positioning to exposure, adjustment of all x-ray settings, an adjustment switch for precise positioning of the unit, and a Source to Object Distance (SOD) indicator that provides the exact distance between the tube and the patient.

Control knobs that adjust the x-ray field have been placed on both the front and the rear of the tube head for enhanced efficiency. This makes positioning easy and speedy as it is not necessary to rotate the tube with each operation.



Other designs for ease-of-use

- Reserve power function for additional exposures
Approximately 10 additional exposures can be taken even in battery shortage emergencies. An LED indicator will light up to warn that the battery has almost run out.
- ON/OFF buzzer setting
The buzzer can be turned off for nighttime use and when a quiet environment is required.

FUJIFILM COMPUTED RADIOGRAPHY
NEW FCR Go

Workflow

Patient information input



Input patient information with the touch-screen panel. By selecting the exposure menu on the CR Console, exposure factor (kV, mA) will be set on the x-ray operation panel.

Exposure preparation



Make final adjustments with exposure factor and unit positioning with the remote panel mounted on the x-ray tube head. Select the IP and cassette size that exactly matches the study from the variously available sizes.

X-ray exposure



Conduct exposure. Obtain sharp image quality with short exposure time through high output capability (tube current 250mA max.) and a small focal spot (0.6mm). The green light indicates x-ray exposure, you can easily confirm even away from the unit.

Reading



Set the exposed IP cassette. As images can be previewed on the spot, the next processing step can be conducted smoothly. IP cassettes can be used repeatedly and there is no need to carry around numerous cassettes.

Image transmission



Read images are transmitted to the hospital network from the image processing unit via wireless LAN. Images can also be transferred to the hospital CR Console with USB memory media.

Fujifilm's proprietary image processing technology Image Intelligence™



Image Intelligence™ enhances diagnostic accuracy and efficiency by analyzing the x-ray images and automatically adjusting both density and contrast.

- **Exposure Data Recognizer (EDR)**
Automatically optimizes the density and contrast of X-ray images.
- **Gradation Processing (GP)**
Optimizes the gradation of each body part image according to its diagnostic purpose.
- **Dynamic Range Compression Technology**
Optimizes contrast to create an image that resembles what was actually perceived.
- **Multi Frequency Processing (MFP)**
Creates emphasized images by simultaneously applying edge enhancement processing on dark/light areas and peripheral tissues.
- **Flexible Noise Control (FNC)**
Suppresses the image noise and realizes enhanced images.

FUJIFILM FCR Go Specifications

Model name: FCR-MB101

Power supply:

Charger

- 100V Type: 120V AC \pm 10% Single phase: 60Hz
Power consumption 1kVA
- 200V Type: 220/230/240V AC \pm 10% Single phase: 50-60Hz
Power consumption 1kVA

X-ray output:

- Max. rating: 15kW
- Tube voltage: 40kV to 130kV in 1kV steps
- Tube Current: Max 250mA
(for 40kV 250mA at 5mAs or less)

X-ray tube:

- Nominal Focal spot size: 0.6 x 0.6 mm
- Maximum anode heat capacity: 100kJ (140kHU)
- Target angle: 17 degrees

Throughput

IP Size	Processing Capacity
35 x 43 cm (14" x 17")	Approx. 62 (87) IPs/hr.
35 x 35 cm (14" x 14")	Approx. 70 (94) IPs/hr.
10" x 12"	Approx. 73 IPs/hr.
8" x 10"	Approx. 87 IPs/hr.
24 x 30 cm	Approx. 75 IPs/hr.
18 x 24 cm	Approx. 92 IPs/hr.
15 x 30 cm	Approx. 73 IPs/hr.

• In the table above, figures in parentheses represent numbers of IPs processed at high-speed mode.

Reading Gray Scale: 12 bits/pixel

Available IP Cassette types and sizes

■ **Type CC**

Inch settings*:

14" x 17", 14" x 14", 10" x 12", 8" x 10", 15 x 30cm

Metric settings*:

35 x 43cm, 35 x 35cm, 18 x 24cm, 24 x 30cm, 15 x 30cm

■ **Type LC (Long view cassette)****

Long-view double cassette

Inch: 14" x 17" and 10" x 12"

Metric: 24 x 30cm

Long-view triple cassette

Inch: 14" x 17", 14" x 14" and 10" x 12"

Readable IP types and sizes

■ **ST-VI (Standard type)**

Inch settings*:

14" x 17", 14" x 14", 10" x 12", 8" x 10", 15 x 30cm

Metric settings*:

35 x 43cm, 35 x 35cm, 18 x 24cm, 24 x 30cm, 15 x 30cm

■ **ST-VN (Standard type)**

Inch settings*:

14" x 17", 14" x 14", 10" x 12", 8" x 10"

Metric settings*:

35 x 43cm, 35 x 35cm, 18 x 24cm, 24 x 30cm

* Inch and metric sizes cannot be used simultaneously.

** When Type LC is used, the Auto-image composition optional software is necessary.

Environmental Conditions:

• **Operating Conditions:**

Temperature: 15-30°C

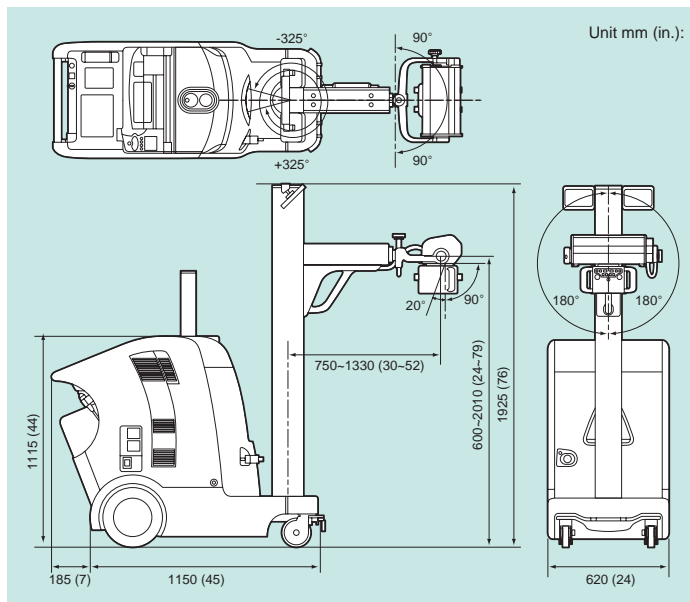
Humidity: 15-80%RH (No dew condensation)

• **Non-operating Conditions:**

Temperature: 0-45°C

Humidity: 10-90%RH (No dew condensation)

DIMENSIONS



ACCESSORIES (Optional)



■ Barcode reader



■ Card reader



■ X-ray shield



■ Remote hand switch



■ IP (Imaging Plate)



■ IP cassette



(Note: 200V Type only)

Specifications are subject to change without notice.
All brand names or trademarks are the property of their respective owners.
All products require the regulatory approval of the importing country.
For details on their availability, contact our local representative.



FUJIFILM Corporation

<http://www.fujifilm.com/products/medical/>